



INSTRUCTION BULLETIN

No. 9015116
Machine: M17
Published: 07-2016
Rev. 00

NOTE: DO NOT DISCARD the Parts List from the Instruction Bulletin. Place the Parts List in the appropriate place in the machine manual for future reference. Retaining the Parts List will make it easier to reorder individual parts and will save the cost of ordering an entire kit.

NOTE: Numbers in parenthesis () are reference numbers for parts listed in Bill of Materials.

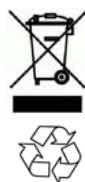
Installation instructions for **kit number 9015065**

SYNOPSIS:

This kit contains the parts needed to replace the filter shaker motor on M17 sweeper- scrubbers.
Please follow step-by-step instructions.

SPECIAL TOOLS / CONSIDERATIONS: NONE

(Estimated time to complete: 1 hour)



PROTECT THE ENVIRONMENT

Please dispose of packaging materials, used machine components such as batteries and fluids in an environmentally safe way according to local waste disposal regulations.

Always remember to recycle.

PREPARATION:

FOR SAFETY: Before leaving or servicing machine, stop on level surface, turn off machine, set parking brake, and remove key.

1. Disconnect the battery cable from the machine.

WARNING: Always disconnect battery cables from machine before working on electrical components.

2. Remove the hopper cover from the machine. Set the hopper cover aside.

3. Disconnect the vacuum hose from the dust filter cover and remove the dust filter cover from the hopper. Set the dust filter cover aside. (Fig. 1)

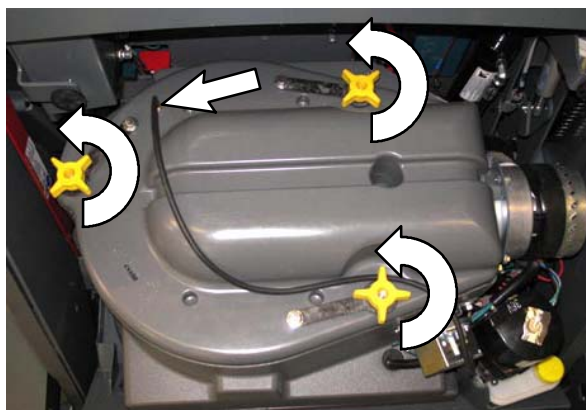


FIG. 1

4. Remove the filter from the hopper. Set the filter aside.

INSTALLATION:

1. Disconnect the harness from the filter shaker motor. Note locations of harness connections on the filter shaker motor.
2. Lift the filter shaker assembly from the hopper. Set the filter spacer aside. (Fig. 2)

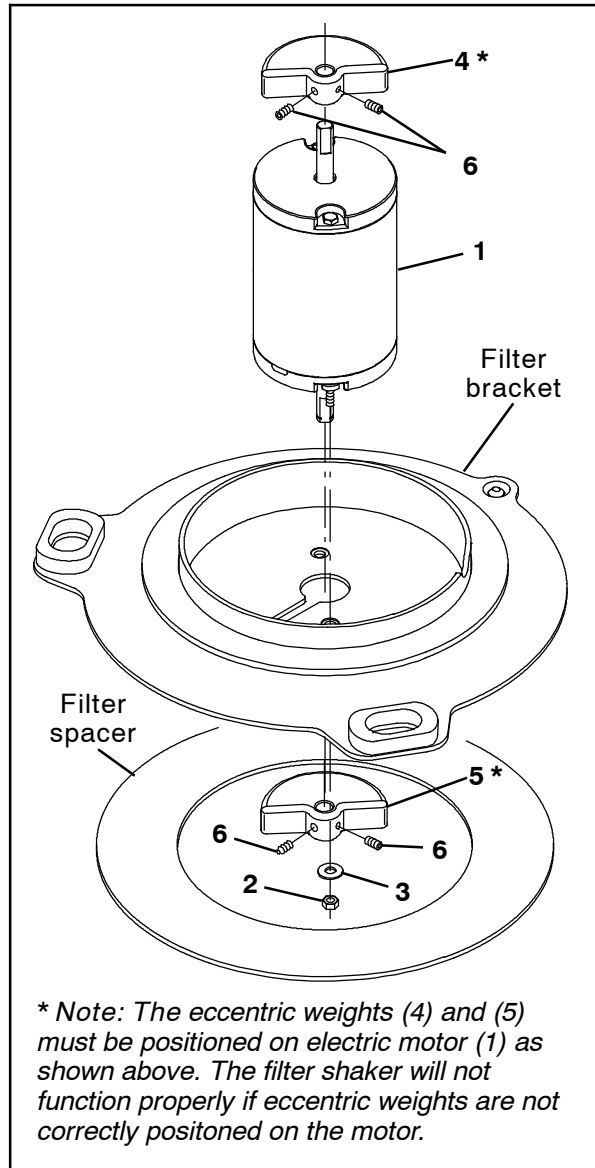
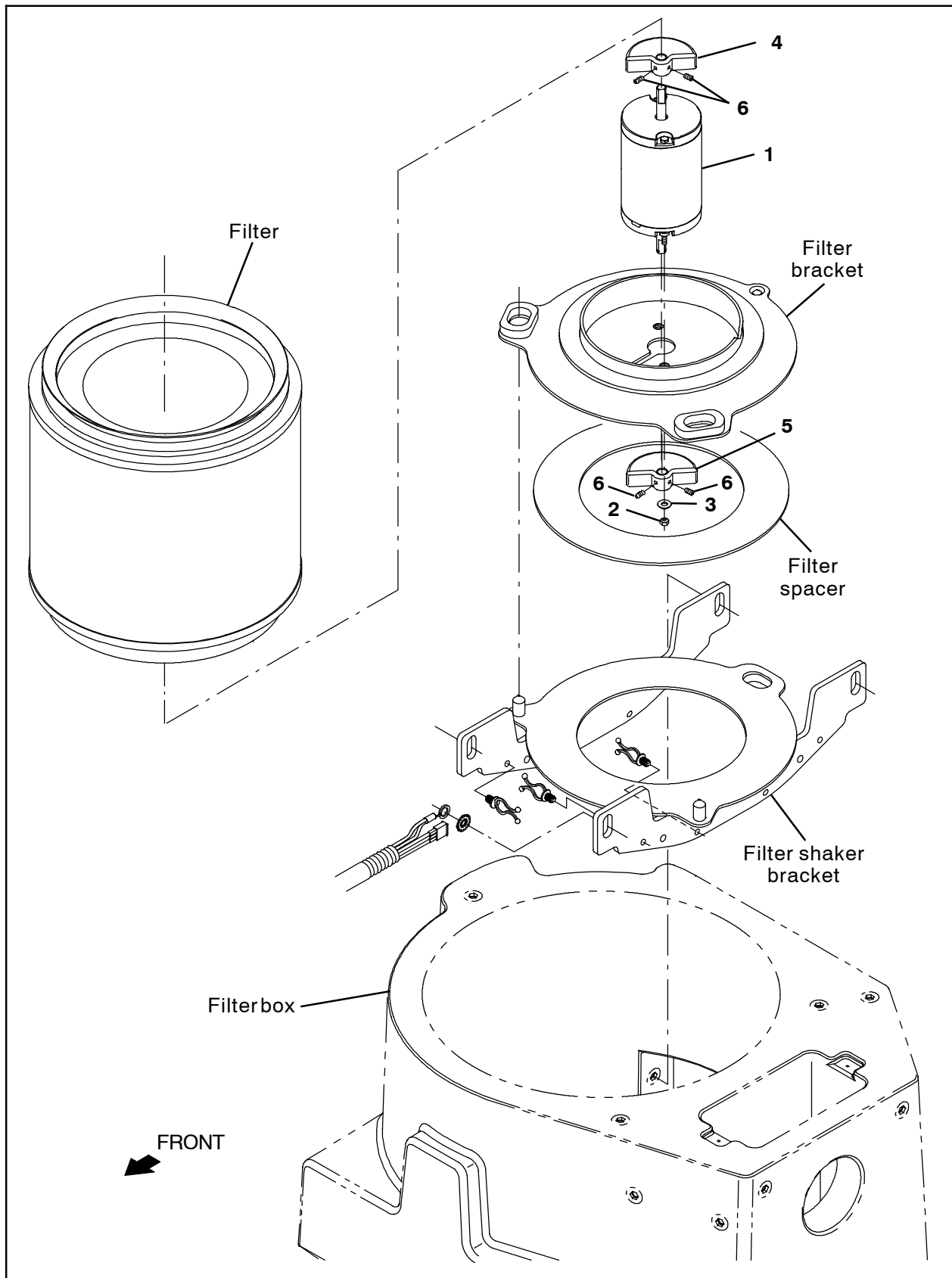


FIG. 2

3. Remove the existing filter shaker assembly from the filter bracket. Discard the filter shaker motor assembly and the hex screws and flat washers used to secure the filter shaker assembly to the filter bracket. (Fig. 2)
4. Use two socket set screws (6) to install the eccentric weight (4) onto the electric motor (1). (Fig. 2)
5. Use two two hex screws (2) and tow flat washers (3) to install the electric motor (1) onto the filter bracket. (Fig. 2)
6. Use two socket set screws (6) to install the eccentric weight (5) onto the electric motor (1). (Fig. 2)
7. Position the filter shaker assembly / filter spacer into the hopper. (Fig. 2)
8. Connect the wire harness to the electric motor (1). (Fig. 2)
9. Reinstall the filter into the hopper (1). (Fig. 2)
10. Reinstall the dust filter cover onto the hopper and reconnect the vacuum hose to the dust filter cover.
11. Reinstall the hopper cover onto the machine.
12. Reconnect the battery cable to the machine.
13. Start and test the machine. Press the filter shaker switch / button to activate the filter shaker. The filter shaker should operate for approximately 30 seconds.



Bill Of Materials For Motor Kit, Ele, Shaker, Afmkt [M17] - 9015065

Ref.	Tennant Part No.	Description	Qty.
1	1047349	Motor, Ele, 36VDC 22017RPM 0.11HP 03.3A	1
2	86618	Nut, Hex, Lock, #10- 32, NL	2
3	19066	Washer, Flat, 0.25B 0.56D .05, PL, 10	2
4	1053291	Weight, Eccentric, Pntd	1
5	1053321	Weight, Eccentric, Pntd	1
6	39322	Screw, Set, Soc, 10- 24 X 0.38, AL	2

TENNANT COMPANY
P. O. Box 1452
Minneapolis, MN 55440-1452